

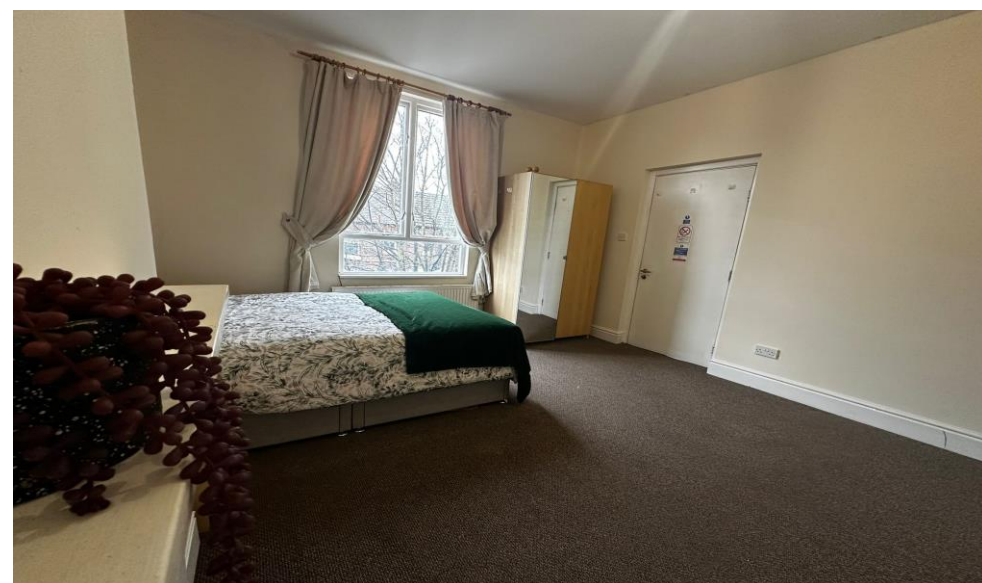


iCCOMMODATE

Property Management, Lettings and Maintenance

Derwent Square
Liverpool, L13 6QT

Professional House Share £550pcm



Score	Energy rating	Current	Potential
92+	A		
81-91	B		
69-80	C		73 C
55-68	D	60 D	
39-54	E		
21-38	F		
1-20	G		

****One Double Room with Ensuite in House Share Available from April****

iCCOMMODATE are pleased to offer for rent, one double room within this large, professional 8 bedroom house share.

All rooms are spacious double bedrooms, furnished with a double bed, bedroom furniture and en-suite bathroom.

There are two shared kitchens, shared living/dining room, a beautiful communal front garden and private off road parking. These facilities are shared by all tenants in the property

Based in the Old Swan area of the city, transport links are located close by with a supermarket at the end of the road as well as plenty of shops, banks, fast food, public houses etc.

UK based guarantor is required for all applicants
The current room available is £550pcm
(Deposit is £550)

- Private en-suite bathroom with each bedroom
- Two shared kitchens
- Great location, close to a wide range of stores, restaurants and public transport links
- Bills included

Email: info@iccommodate.co.uk / Tel: 0151 291 1770

TO LET



shutterstock.com • 387717475

Zoopla

nTheMarket.com

www.iccommodate.com